



HOIST & TIPPLE

PARK CITY HISTORICAL SOCIETY NEWSLETTER

OCTOBER 2005

www.parkcityhistory.org *

© 2005

Ghosts Tell Their Stories October 30th

"Halloween at the Glenwood," a seasonal tradition for all ages, will be held on Sunday, Oct. 30 from 12 noon to 2 p.m. in the rain, shine or snow.

Performances are continuous during the two-hour period. Nine thespians will deliver vivid stories at the gravesides of the Park City residents, who lived during the town's colorful silver-mining era.

This year's cast features Sydney Reed as Blanche Fletcher, Doug Fryer as John Whitta, Chloe Fryer as Lucy Whitta, Katherine Henney as Jennie Hover, Lannie Scopes as Patsy Coughlin, Frank Normile as William Gidley, Stacy Dymalski as Lizzy Scully, Jan Davison as Matilda Wiest, and Barbara Martz as Harriet Truscott.

Admission is free, but donations are encouraged. The Glenwood is dependent upon public contributions for its maintenance, and this event is the main source of funding for the year.

The cemetery is located at the end of Silver King Drive, near the intersection of Silver King Drive and Three Kings Drive. Parking is available at Park City Mountain Resort. For more information, call 649-7457. — Rachel Anderson



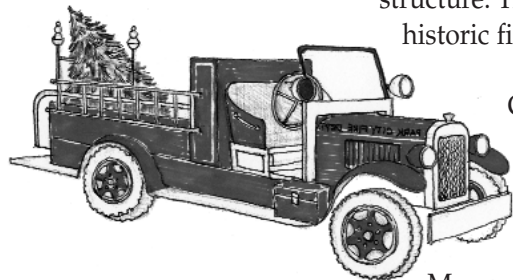
Patsy Coughlin, the "Strawberry Thief"



Barbara Martz as Margaret Shields

Hang a Fire Truck on Your Christmas Tree

Park City Museum's annual brass Christmas ornament usually features an historic business, home, church or mining structure. The 2005 ornament departs from this tradition by featuring one of our two surviving historic fire trucks -- the Graham Brothers Dodge auto-fire truck.

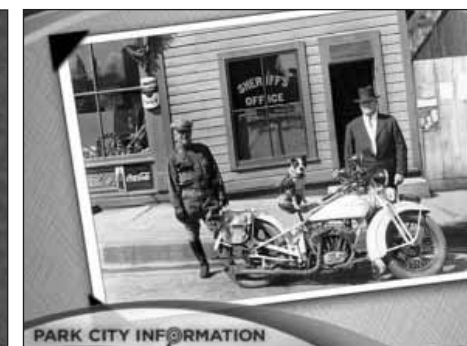
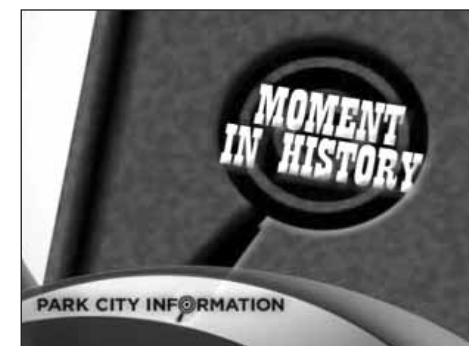


The 3/4-ton truck was purchased in 1926 and picked up in Salt Lake City by Fire Chief William Berry. It arrived just in time for the Utah State Firemen's Association Convention in Park City. The Park Record reported, "The Volunteer Fire Department is now specially well-equipped and particularly well-manned."

By 1929, the Park City Fire Department owned and operated four fire trucks, all of which were located in the old City Hall. Now on display at the Fire

Museum in Tooele County, our Graham Brothers truck will be returned when the Museum

expansion is completed. The new fire truck ornament, designed by local artist Judy Taylor, is available for purchase at the Park City Museum.



Park City Moments in History

The Infochannel is running ten-second spots for the Park City Museum. Visitors learn of our colorful past and hear, "Come visit the Park City Museum on Main Street and discover many moments in Park City's history."

A big thank you goes to the Infochannel for making these messages possible.

PARK CITY HISTORICAL SOCIETY & MUSEUM Membership Application

- Senior/Student \$15
- Individual \$25
- Senior Couple \$30
- Family \$50
- Silver Donor \$100+
- Bonanza Donor \$500+
- Motherlode Donor . . \$1000+
- Check is enclosed

SEND TO:
Park City
Museum
P.O. Box 555,
Park City, UT
84060

435-649-7457

Credit Card # _____

Exp. Date _____

Name _____

Address _____

Phone _____

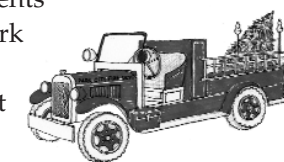
I would like to volunteer I would like to receive emails
my email address is: _____

HISTORICAL SOCIETY & MUSEUM CALENDAR OF EVENTS 2005

Watch for two events in
early 2006.
Our "40 Year Growth"
slide show and our
"Smith & Brim" party

OCTOBER
Sunday,
October 30
Noon-2:00 pm
"Halloween at the
Glenwood"

Christmas Ornaments
on sale at the Park
City Museum,
528 Main Street



Guided Museum Tours
Wednesdays 2 pm
beginning
November 30

**CUT OUT AND
PUT ON YOUR
FRIDGE**

PARK CITY
HISTORICAL
SOCIETY AND
MUSEUM
P.O. BOX 555
PARK CITY
UTAH 84060
435-649-7457

PRSR STD
U.S. POSTAGE PAID
PARK CITY, UTAH
PERMIT NO. 6

Dungeon Party Fabulously Attended

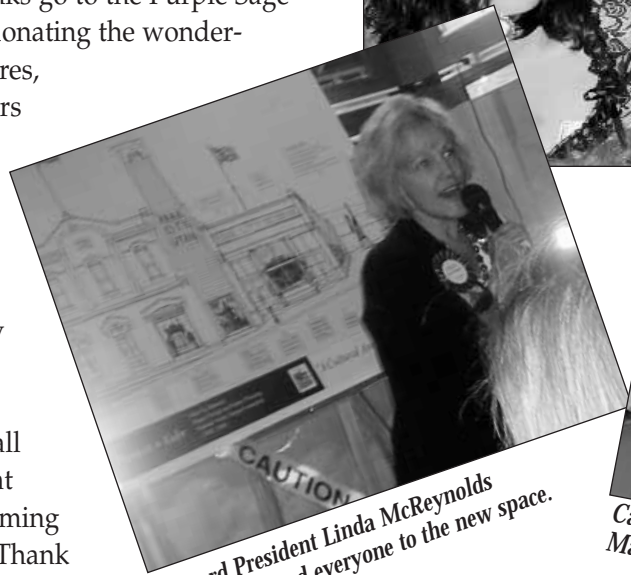
Kisses & Anticipation as PCHS Moves into Fabulous New Space

The annual Dungeon Party for members, held on October 7th, was a smashing success. We celebrated our new space in the old public library building at 518 Main Street which was decked to the nines to mark the occasion.

Many thanks go to the Purple Sage Restaurant for donating the wonderful hors d'oeuvres, EastWest Partners for sponsoring the bar, and Wasatch Brew Pub for donating beer. The Community Involvement Committee gets high marks for all the planning that went into welcoming our new space. Thank you so much!



Bill Coleman gets a smooch from Mother Urban: \$5 a kiss! Katherine Matsumoto looks on.



Board President Linda McReynolds welcomed everyone to the new space.



Carol Tesch as the Silver Queen with Mayor Dana Williams.

Board Member Profile

Zibby Tozer has brought zest and sophistication to the Park City Historical Society & Museum. As co-chair of the Women's Guild with Sydney Reed, Lynn Fey and Wendy Lavitt, Zibby's long list of influential contacts has moved our Museum Expansion project beyond a potential to a serious plan.

A professional interior designer, Zibby has specialized in housing for the low income elderly and won national awards for her work.

She is active in both Park City and New York where she serves on several boards including Balanchine's School of American Ballet at Lincoln Center, the Museum of the City of New York, the National Academy of Design, and The Horticultural Society of New York.

An accomplished florist, Zibby wrote the best seller, "The Art of Floral Arranging." She is married to Jim Tozer and has two daughters and three granddaughters.



Zibby Tozer

Welcome Lindsey!

Lindsey Smith has joined the Park City Historical Society & Museum as "History and Heritage Intern." A graduate of the University of Massachusetts at Amherst, she has worked as Museum Property and Curatorial Assistant for the U.S. Fish and Wildlife Service in Hadley, Mass. In New Hampshire she helped curate the Hay Family's possessions including photographs of President Abraham Lincoln and his personal secretary John Hay.

Special thanks go to Board member Jan Massimino and her family, who are providing accommodations for Lindsey in their home, thus making Lindsey's internship financially possible.



Lindsey Smith

Leland Jerome Paxton Collection



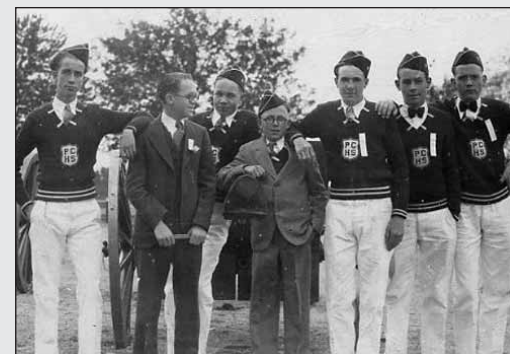
Jerome and Alice Paxton as a young couple in Park City, ca. 1907.

When Jerome and Alice Paxton married in 1907, Main Street was a dirt road, boardwalks kept ladies' skirts somewhat clean, and 305 Main Street housed the First National Bank where Jerome was president. The Paxton's sons, Clarence and Leland, were born soon after.

Leland, who was an "upper-ender" at the Jefferson School on the top of Park Avenue, preserved memorabilia over the years. He has generously donated hundreds of items from his treasure trove of Park City history. In addition to photographs taken during his childhood in the 1920s & 30s, Leland Paxton has donated many fascinating objects. We are grateful for his kindness and generosity.



Calling themselves the "Daly West Bunch," five women including Alice Paxton (left) loved to play cards and talk.



Leland Paxton (second from left) chums with other Park City High School Band members between 1930-1931.



Leland's band sweater



Used by Ann George Turner, this trunk came from East Dereham, England.

Volunteers Feted at St. Mary's

The Volunteer Luncheon held on Thursday, September 22nd was a big success, thanks to Eileen Dunn and the staff of Done to Your Taste Catering and their delicious chicken salad wraps and London broil sandwiches. Many thanks also to Father Bob Bussen and the staff of St. Mary's Catholic Church in Old Town for donating the Social Hall for the event.



Peg Bodell and mother-daughter volunteer duo, Katherine & Cindy Matsumoto

Community Involvement Committee

Co-chair: Jennie Lewis
Co-chair: Katherine Saville

Ron Butkovich
Deena Eytan
Barbara Gaddis
Cherry Hertler
Sue Hiller
Julie Hopkins
Pat Kenny
Diana Lobdell
Linda McReynolds
Cindy Matsumoto
Sydney Reed
Jane Washington

Park City Historical Society & Museum Board of Trustees

Linda McReynolds, President
Jim Tadeson, Vice President
Sydney Reed, Secretary
Rory Murphy, Treasurer

Ron Butkovich	Jennie Lewis
Debbi Compton	Jan Massimino
Hal Compton	Cindy Matsumoto
Marcie Davis	Ken Martz
Lynn Fey	Hal Milner
Kristen Fletcher	Carol Nichols
Julie Hopkins	Bonnie Peretti
Pat Kenny	Katherine Saville
David Krajleski	Ella Sorenson
Carol Larson	Zibby Tozer
Wendy Lavitt	Gil Williams

